

State of the labor market:

Eastern Washington WDC

(Pend Oreille, Lincoln, Ferry, Whitman, Asotin, Garfield, Columbia, Walla Walla and Stevens Counties)

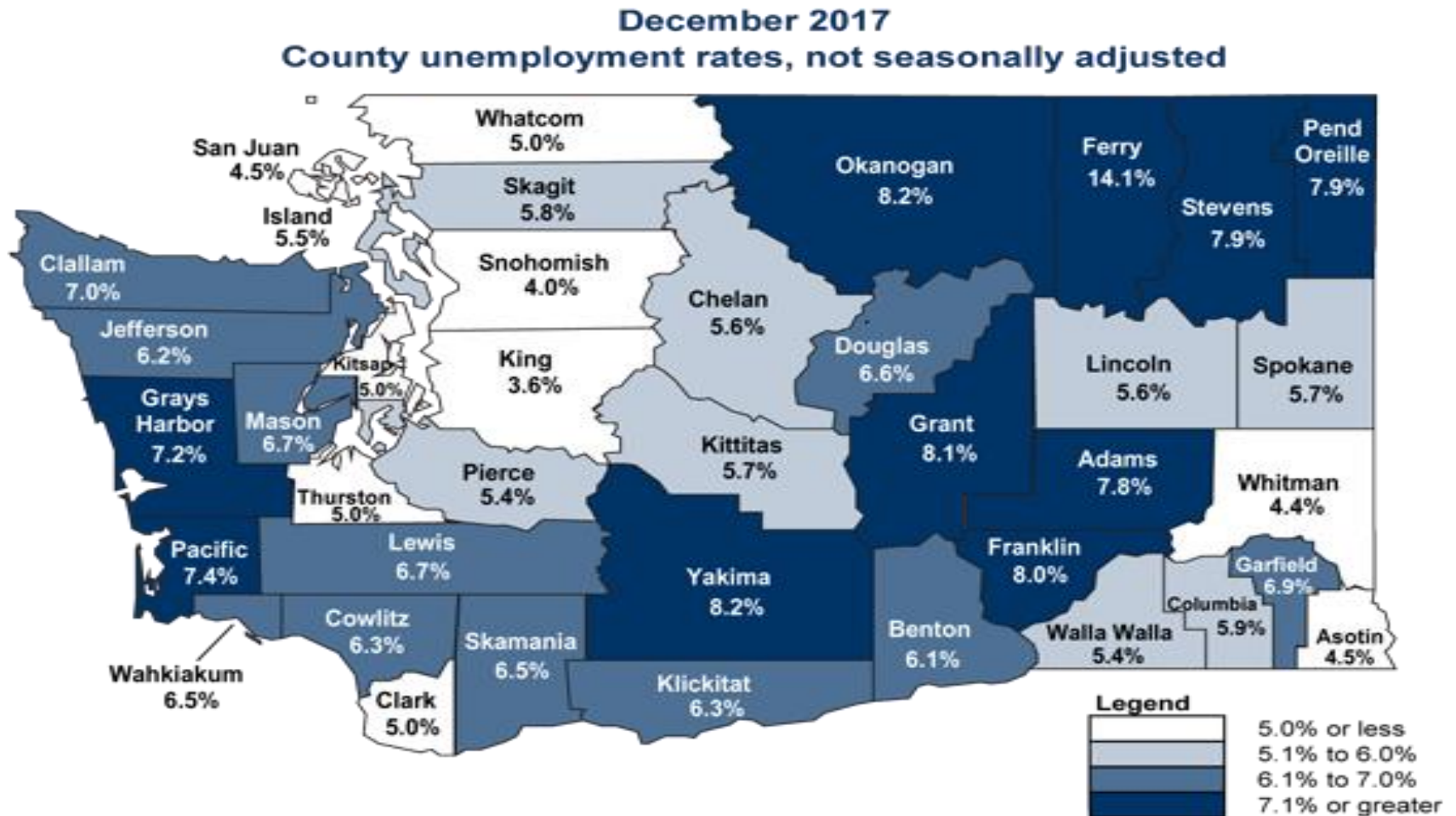
Ajsa Suljic, Regional Labor Economist

February 22th, 2018

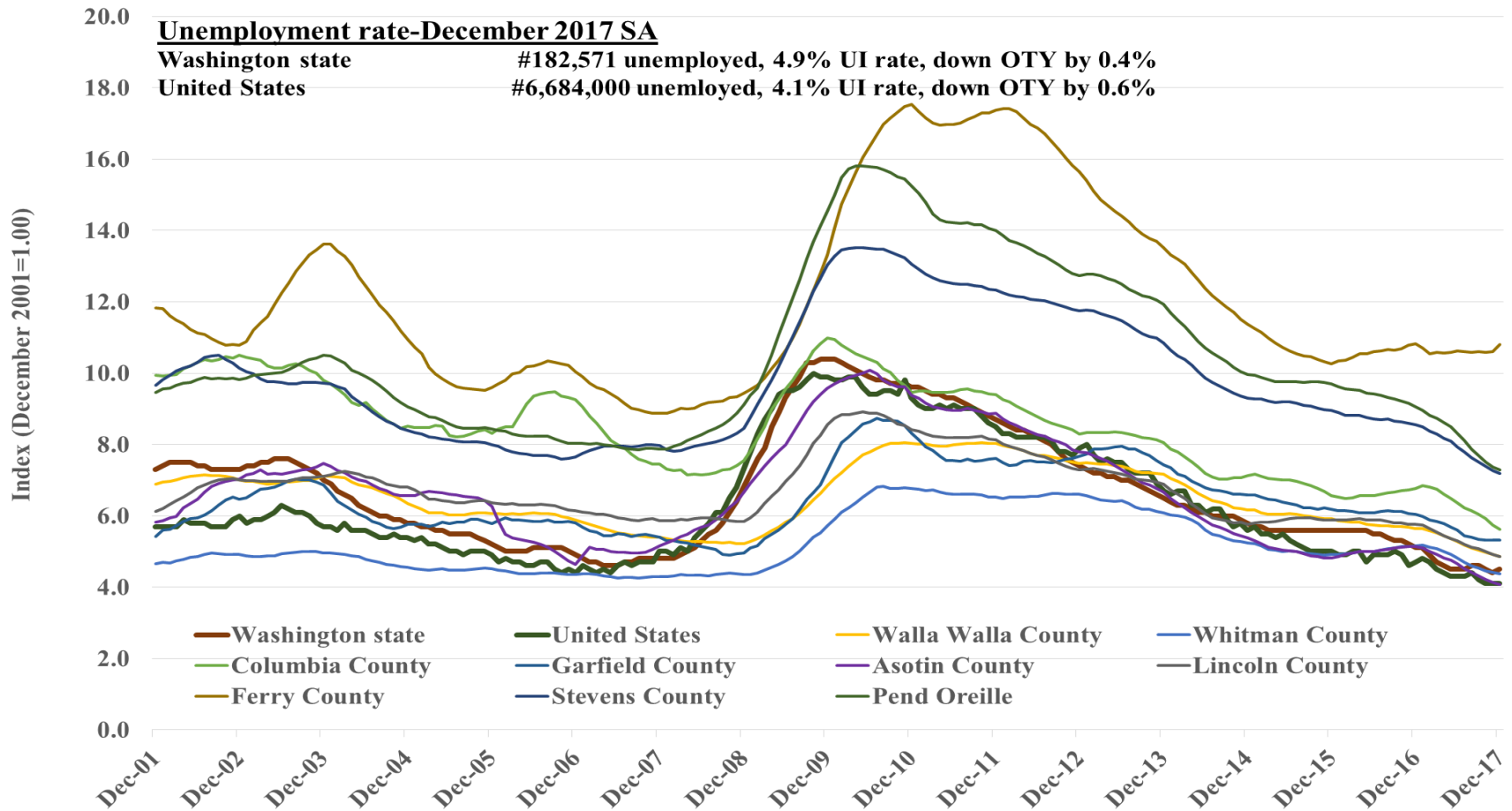


**Employment
Security
Department**
WASHINGTON STATE

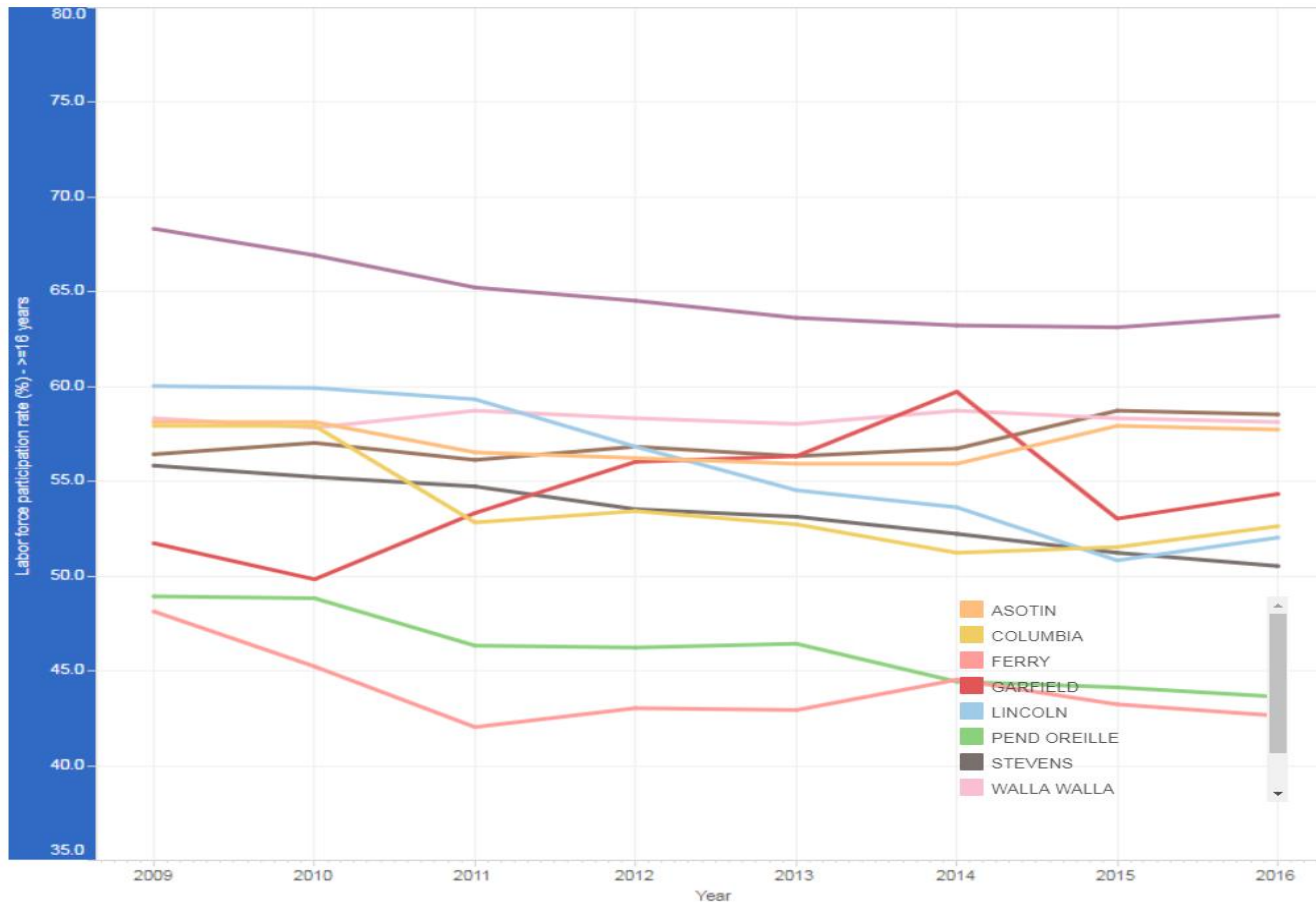
Unemployment around the state



Unemployment rate trend



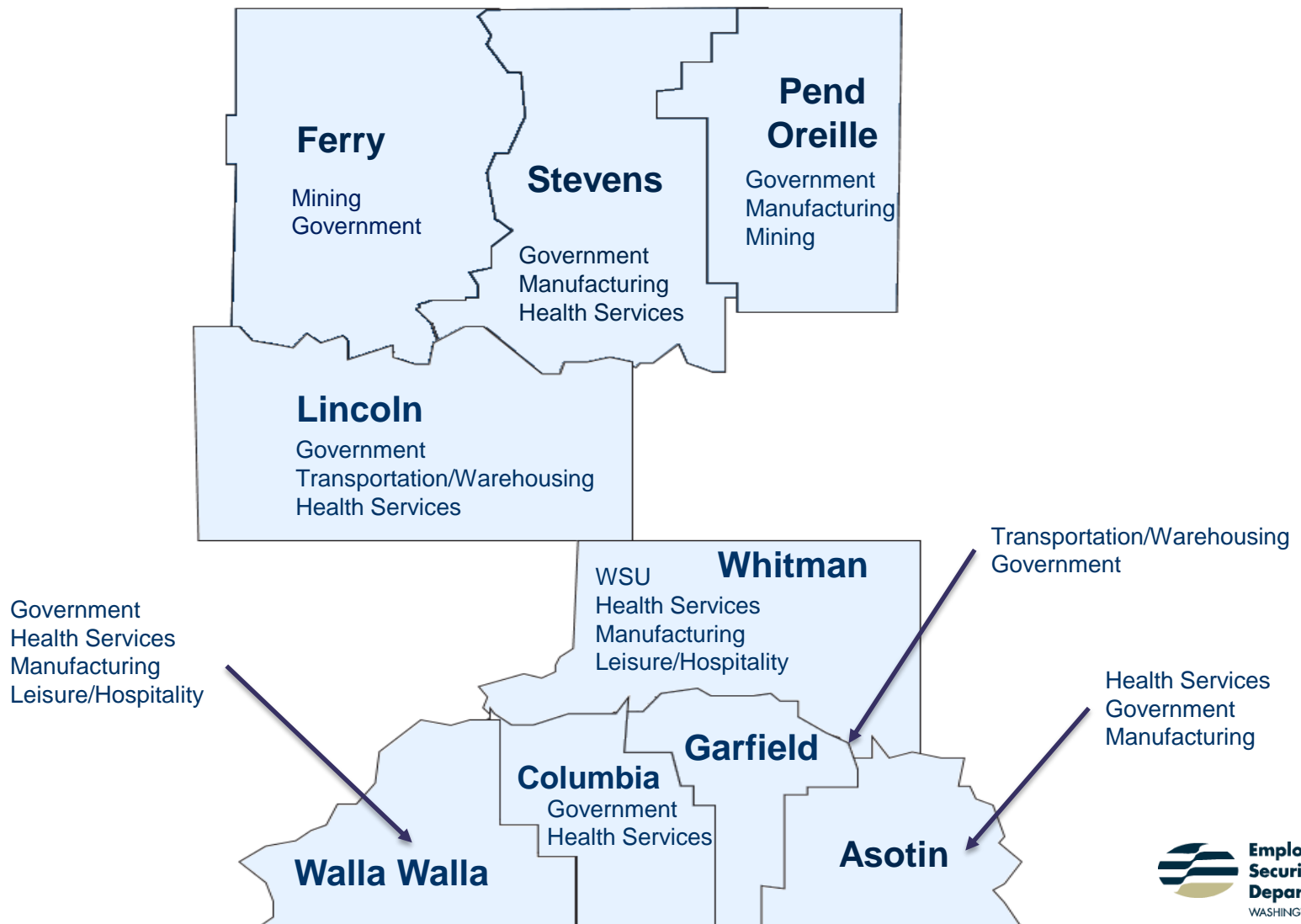
Labor force participation rate 2016



Note: Represents the percentage of persons in the civilian noninstitutional population 16 years of age and older that are employed or actively looking for work.

Source: U.S. Census Bureau, American Community Survey, 5-year estimates

Major Industries by County



County nonfarm changes

- Asotin County nonfarm OTY (280) 4.4%
 - Construction (10) 2.5%
 - Manufacturing (20) 4.4%
 - Private healthcare and education (160) 9.8%
 - Local government (100) 8.3%
 - Retail trade (20) 1.8%
 - Leisure and hospitality (-20) -2.8%
- Garfield County nonfarm OTY (80) 12.1%
 - Government (100) 21.3%
 - Trade, transportation, and utilities (-10) -7.7%

County nonfarm changes

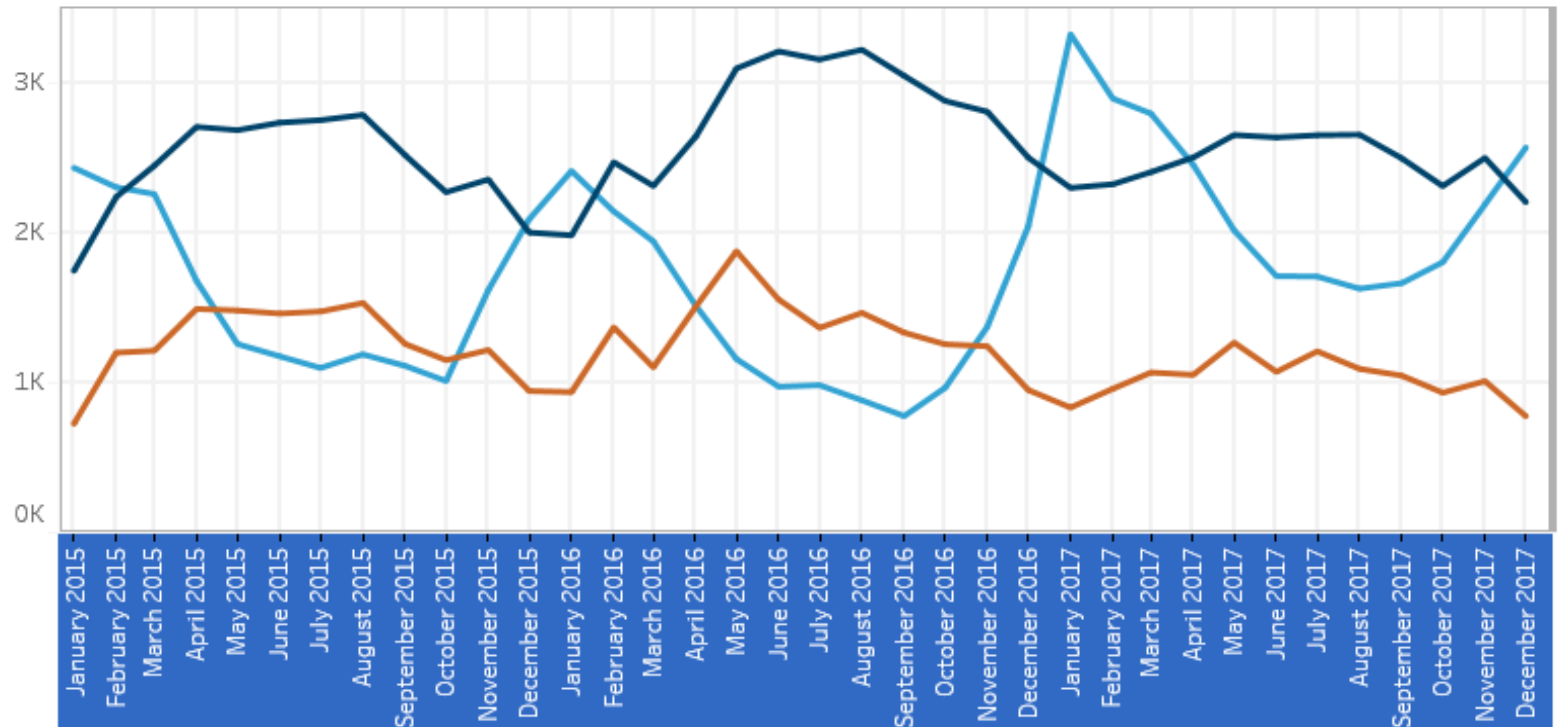
- Ferry County nonfarm OTY (0) 0.0%
 - Construction (-20) -13.3%
 - Leisure and hospitality (-10) -11.1%
 - Government (10) 1.2%
 - Trade, transportation, and utilities (30) 21.4%
- Lincoln County nonfarm OTY (0) 0.0%
 - Construction (-20) -10.0%
 - Manufacturing (-10) -20.0%
 - Trade, transportation, and utilities (-20) -3.7%
 - Government (10) 0.8%
 - Information and Financial Activities (50) 62.5%

County nonfarm changes

- Whitman County nonfarm OTY (460) 2.0%
 - Construction (-10) -2.6%
 - Manufacturing (20) 0.7%
 - Trade, transportation, and utilities (60) 2.6%
 - Government (110) 0.8%
 - Information and Financial Activities (70) 13.2%
 - Professional and business services (80) 21.1%
 - Leisure and hospitality (100) 5.3%

Labor Market Supply/Demand Report Eastern Washington WDA 10

Supply Demand Chart



Digit: 2 3
 Occupation: (All)
 WDA: WDA 10 - Eastern
 Measure Names:
■ Demand (Total Job Postings)
■ Demand (New Job Postings)
■ Supply

Labor Market Supply/Demand Report

Eastern Washington WDA 10

Labor Market Supply/Demand Report by Month

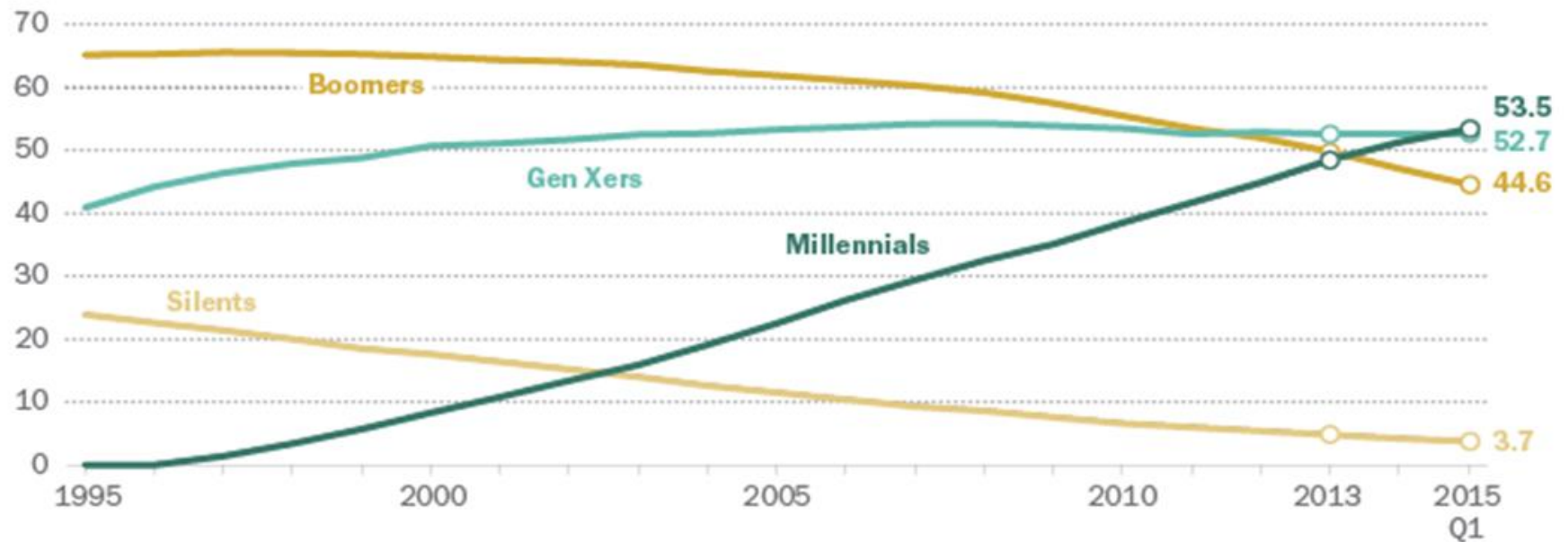
WDA 10 - Eastern (All) 2017

Demand (Total Online Job Postings)*	29,594	Percent of selected area workforce who live outside the area and commute in to work ¹	37.5%
Occupational Groups	Total Online Job Postings	Supply*	Gap*
Architecture and Engineering Occupations	887	693	194
Arts, Design, Entertainment, Sports, and Media Occupations	508	434	74
Building and Grounds Cleaning and Maintenance Occupations	860	921	-61
Business and Financial Operations Occupations	801	693	108
Community and Social Service Occupations	1,097	272	825
Computer and Mathematical Occupations	739	543	196
Construction and Extraction Occupations	860	5,288	-4,428
Education, Training, and Library Occupations	1,309	423	886
Farming, Fishing, and Forestry Occupations	313	2,132	-1,819
Food Preparation and Serving Related Occupations	1,355	1,165	190
Healthcare Practitioners and Technical Occupations	7,018	478	6,540
Healthcare Support Occupations	1,661	478	1,183
Installation, Maintenance, and Repair Occupations	1,318	1,447	-129
Legal Occupations	57	42	15
Life, Physical, and Social Science Occupations	682	618	64
Management Occupations	1,810	2,851	-1,041
Military Specific Occupations	32	95	-63
Office and Administrative Support Occupations	2,631	1,981	650
Personal Care and Service Occupations	419	418	1
Production Occupations	763	2,290	-1,527
Protective Service Occupations	385	618	-233
Sales and Related Occupations	1,833	1,027	806
Transportation and Material Moving Occupations	2,256	2,444	-188
Grand Total	29,594	22,351	7,243

Labor force by generation

U.S. Labor Force by Generation, 1995-2015

In millions



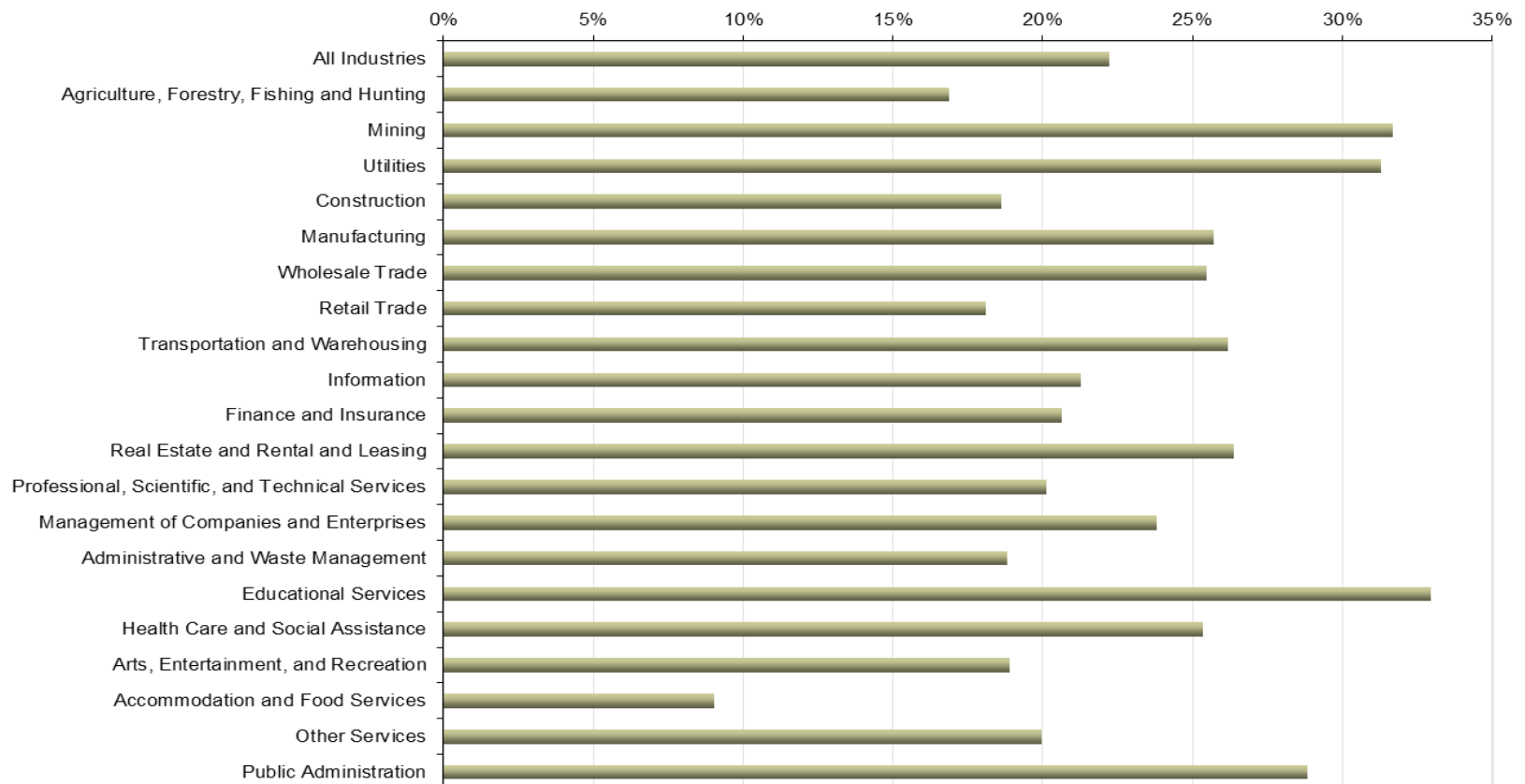
Note: Annual averages plotted 1995-2014. For 2015 the first quarter average of 2015 is shown. Due to data limitations, Silent generation is overestimated from 2008-2015.

Source: Pew Research Center tabulations of monthly 1995-2015 Current Population Surveys, Integrated Public Use Microdata Series (IPUMS)

PEW RESEARCH CENTER

Population distribution by age group

**Percent of Jobs Held by Workers Age 55+
Spokane County, 2016**



Thank you

Ajša Suljić
Regional Labor Economist
ASuljic@esd.wa.gov
509-734-5928
esd.wa.gov/employmentdata